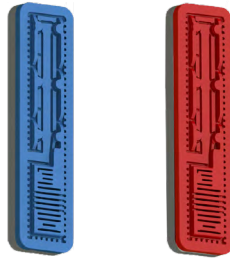


TurfDrip Heavy wall Drip Line

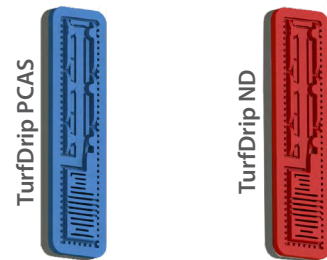


High efficiency and versatility for landscape irrigation solution

- Pressure-compensating dripline
- Efficient self-cleaning labyrinth
- Ideal for landscape application
- No-Drainage (ND): prevents drainage in slopy terrains and allows all emitters to open/close at the same
- It can be installed both in subirrigation than layed on the ground

TurfDrip - High efficiency and versatility for landscape irrigation solution

The pressure-compensating (PC) design enables water application accuracy in variable topography ensuring the same amount of water for all the drip lines length. Efficient self-cleaning turbulence provided by the cascade labyrinth ensures consistent performance, high uniformity in water distribution and long lasting. Brown color to suit gardening and lanscape applications.

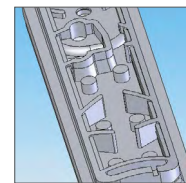


Technical Data

Nominal Ø	→ ←		Ext. Ø	Int. Ø	Max. (bar)	(m)	L/h	KD	Connector type		Maximum Drip Line Length Calculated at maximum Operating Pressure Slope: 0% Spacing between drippers (cm)													
											Standard												Custom	
											15	20	30	40	50	60	70	75	80	90	100	(m)	(m)	
16	1.14	45	16.08	13.8	3.5	500	1.6	0.92	•		82	106	151	193	232	268	302	320	336	367	397			
							2.2				66	86	123	156	188	218	246	260	273	299	323			
16	1.2	47	16.2	13.8	3.5	500	1.6	0.92	•		82	106	151	193	232	268	302	320	336	367	397			
							2.2				66	86	123	156	188	218	246	260	273	299	323			

Flow rate:
1.6, 2.2 l/h

ND: Opening pressure: **1.0 bar**
Closing pressure: **0.2 bar**
Pressure regulating range:
PC, AS: **0.5-3.5 bar**
ND: **1.0-3.5 bar**

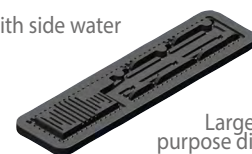


Weir design prevents root intrusion and sand suction



Non-drainage and anti-siphon

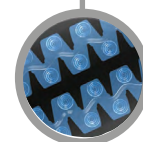
Filter with side water inlets



Large, double-purpose diaphragm



Cascade labyrinth wide water passage and strong self-cleaning operation



TurfDrip Flow Rate Color Codes

Dripper Flow rate (l/h)	Dripper Body color	Dripper Cover color	PC/AS/ND
1.6	Light brown	Black	PC
1.6	Light brown	Blue	AS
1.6	Light brown	Red	ND
2.2	Light blue	Black	PC
2.2	Light blue	Blue	AS
2.2	Light blue	Red	ND

Case study outcomes are for information purposes only and actual results may vary. This literature has been compiled for worldwide circulation and the descriptions, photos, and information are for general purpose use only. Please consult with an irrigation specialist and technical specifications for proper use of Rivulis products. Because some products are not available in all regions, please contact your local dealer for details. Rivulis reserves the right to change specifications and the design of all products without notice. Every effort has been used to ensure that product information, including data sheets, schematics, manuals and brochures are correct. However information should be verified before making any decisions based on this information.